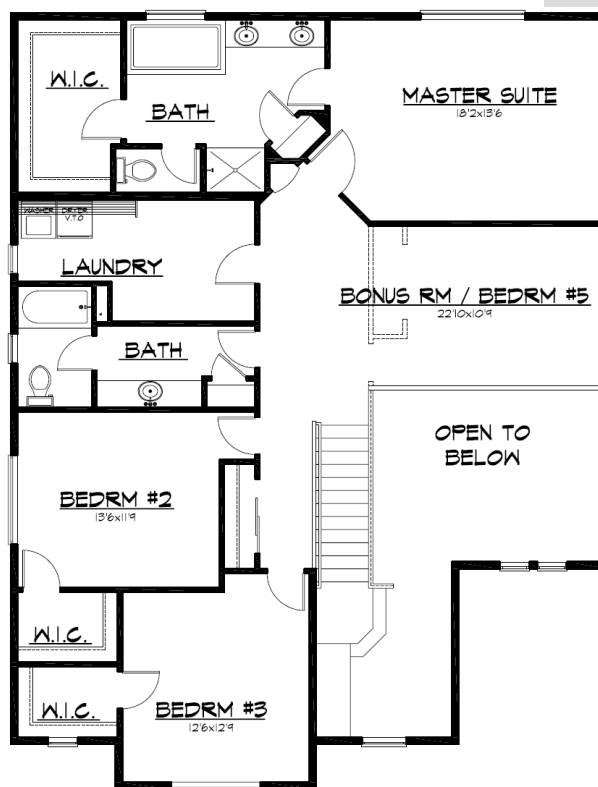
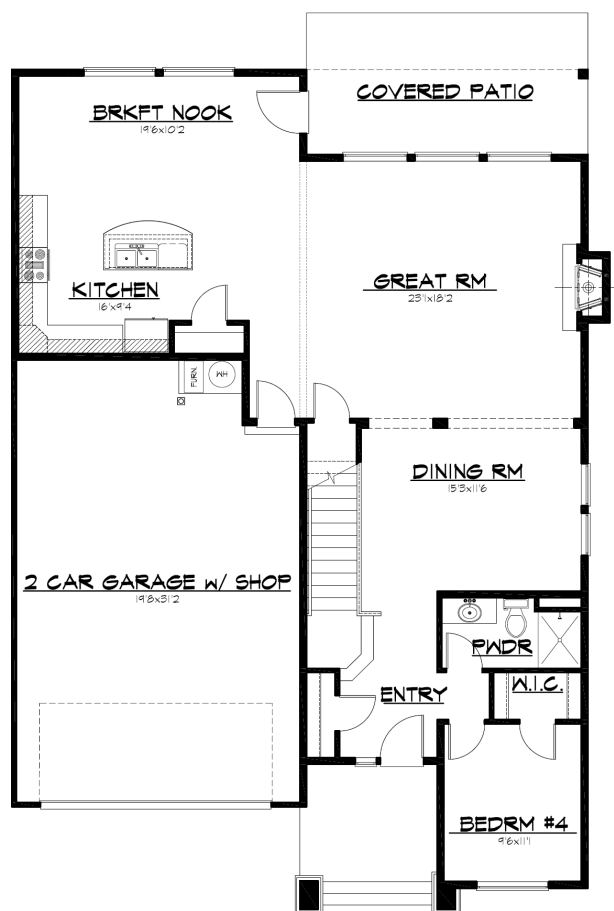




Elevation A



Elevation B



The Brighton

Belmark
Homes

2929 Sq. Ft.

*4 bedrooms (with an optional 5th bedroom)

*2.75 bath

*Oversized Great room

*Large kitchen with breakfast nook

*Upstairs bonus room

*Upstairs laundry room/Craft Center

Plans and specifications subject to change at any time. Revised Dec. 09

www.belmarkhomes.com