



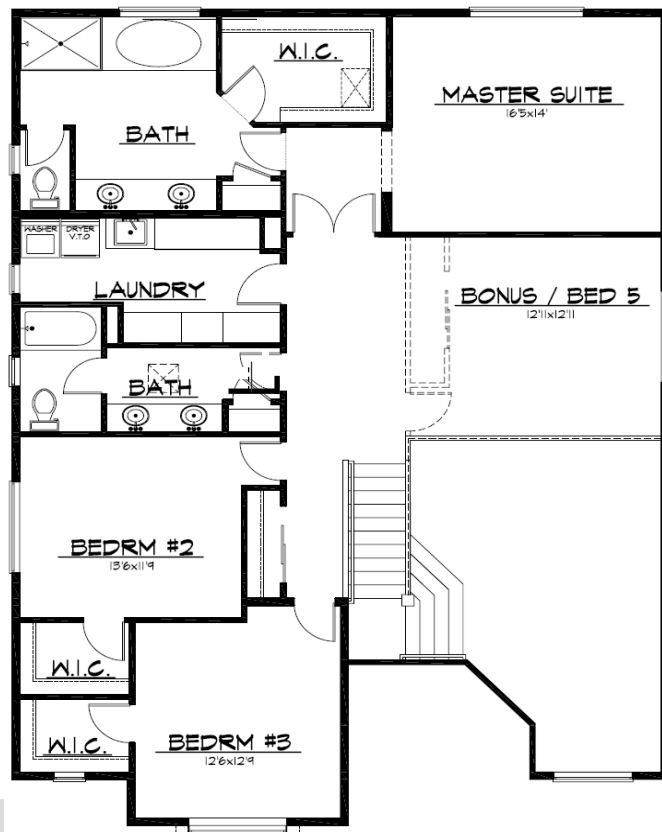
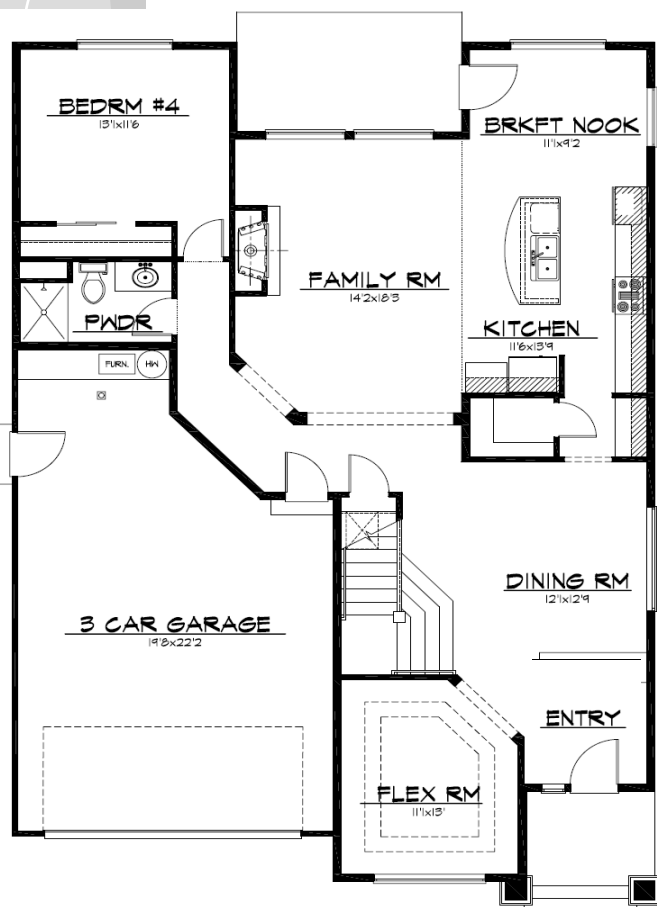
Elevation A



Elevation B



Elevation C



## The Summerlin

3100 Sq. Ft.

\*4 bedrooms (with an optional 5th bedroom)

\*2.75 bath

\*Family room

\*Flex room

\*Large kitchen with breakfast nook

\*Upstairs laundry room/Craft Center

Plans and specifications subject to change at any time. Revised June 08

[www.belmarkhomes.com](http://www.belmarkhomes.com)