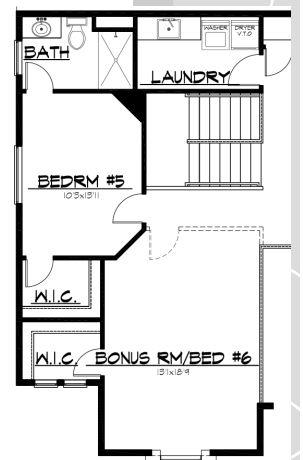
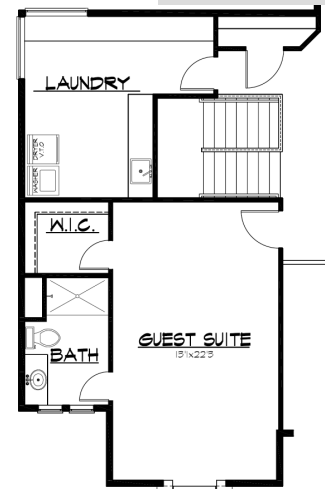
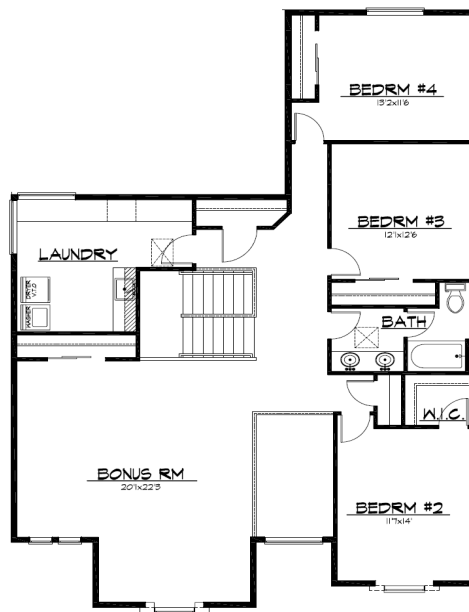
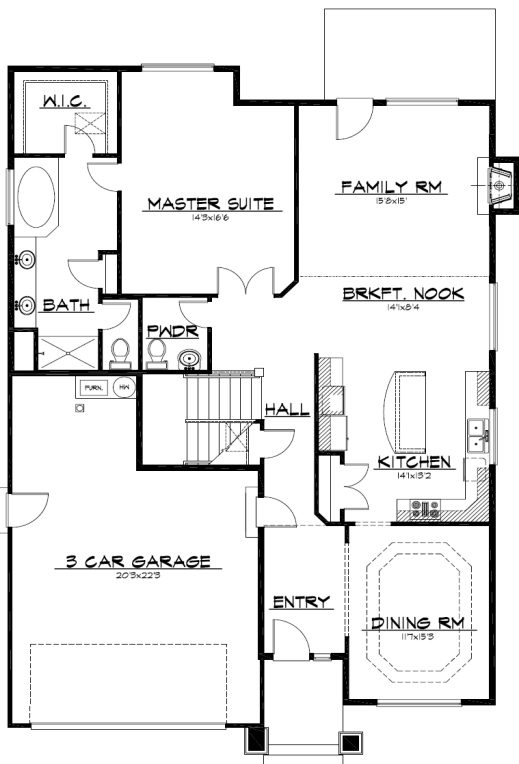




Elevation A



Elevation B



The Bridgeport

Belmark
Homes

3188 Sq. Ft.

*4 bedrooms (with an optional 5th bedroom)

*2.5 bath

*Family room

*Upstairs Bonus room

*Large kitchen with breakfast nook

*Upstairs laundry room/Craft Center

Plans and specifications subject to change at any time. Revised June 08

www.belmarkhomes.com