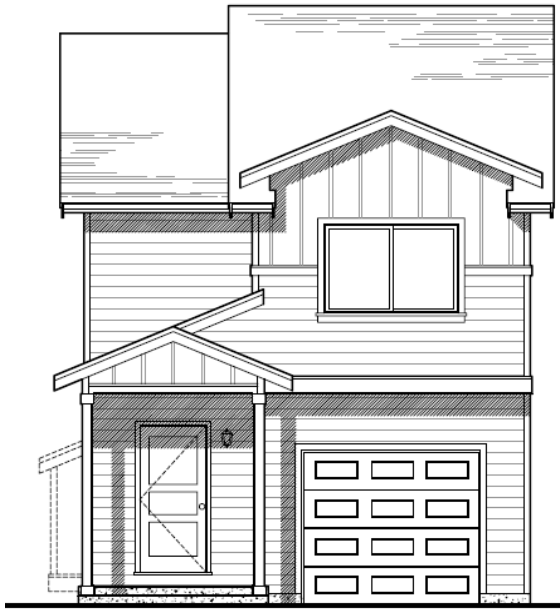


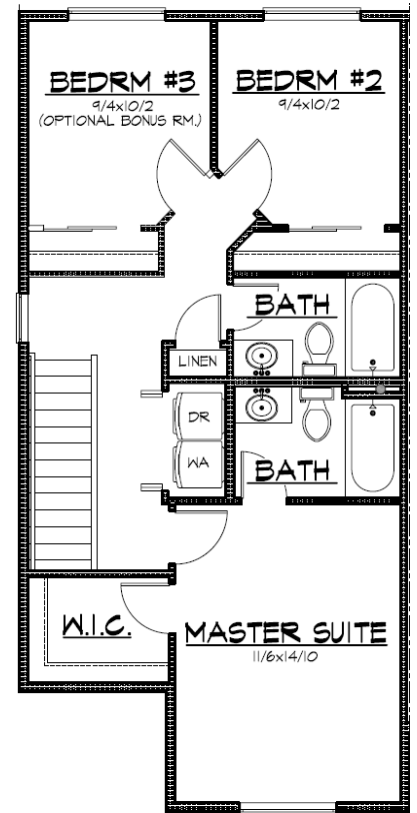
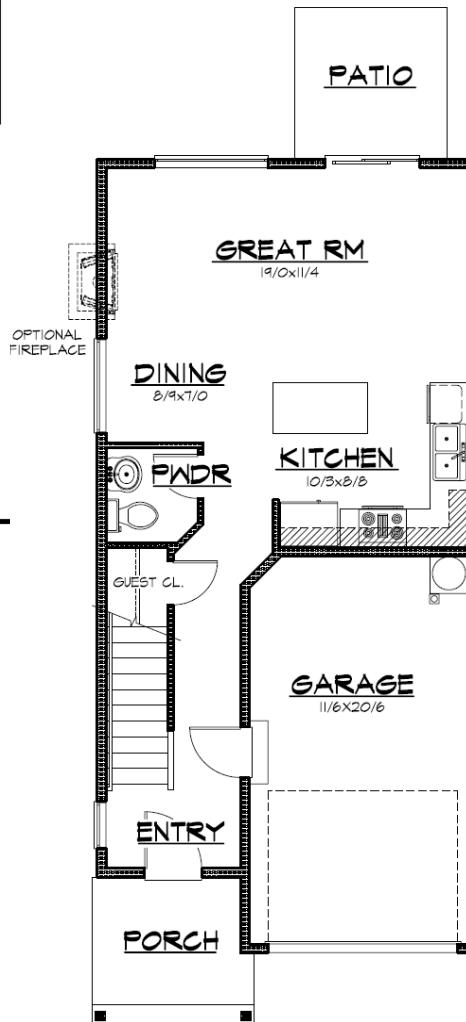
# SHASTA RIDGE



Elev. A



Elev. B



## The 'St. Helens' (Attached Townhomes)

1,273 Sq. Ft.

- 3 bedrooms
- 2.5 bath
- Oversize Great Room
- Kitchen with separate dining
- Upstairs laundry

Plans and specifications subject to change at any time. Nov. 09

**belmarkhomes.com**

