

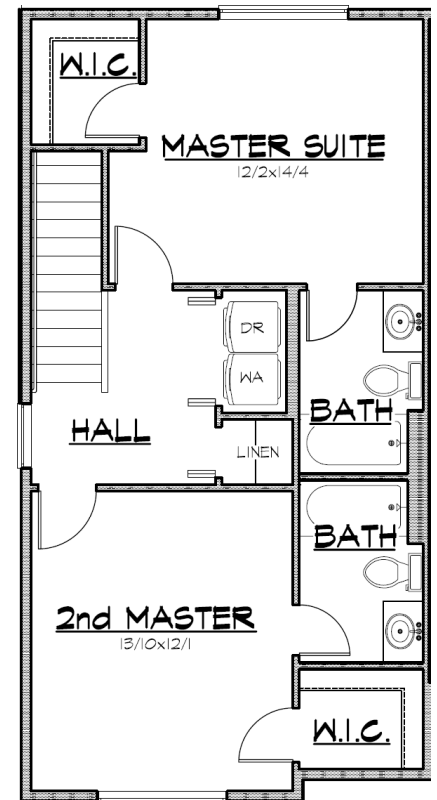
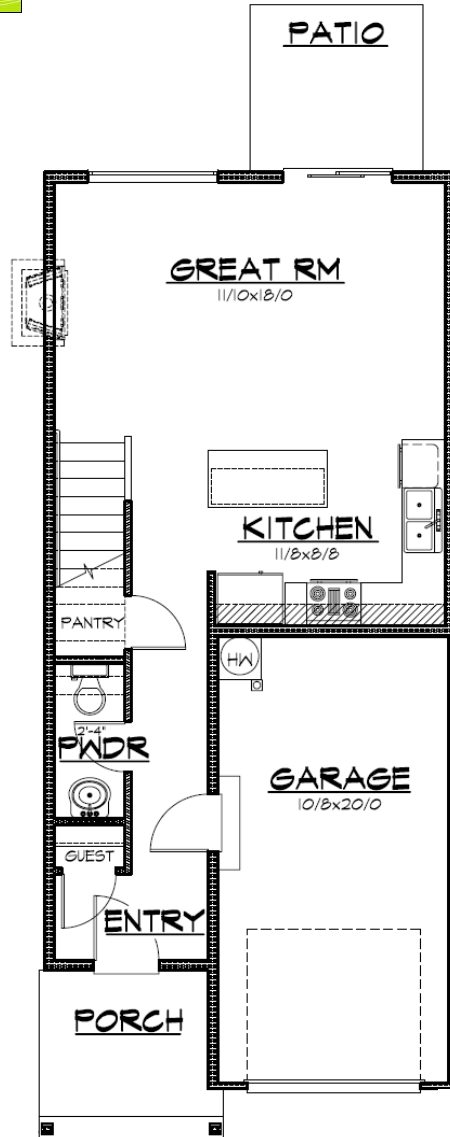
SHASTA RIDGE



Elev. A



Elev. B



The 'Pilchuck' (Attached Townhomes)

1,164 Sq. Ft.

- 2 bedrooms
- 2.5 bath
- Spacious Great Room
- Kitchen with large island
- Upstairs laundry

Plans and specifications subject to change at any time. March 2010

belmarkhomes.com

